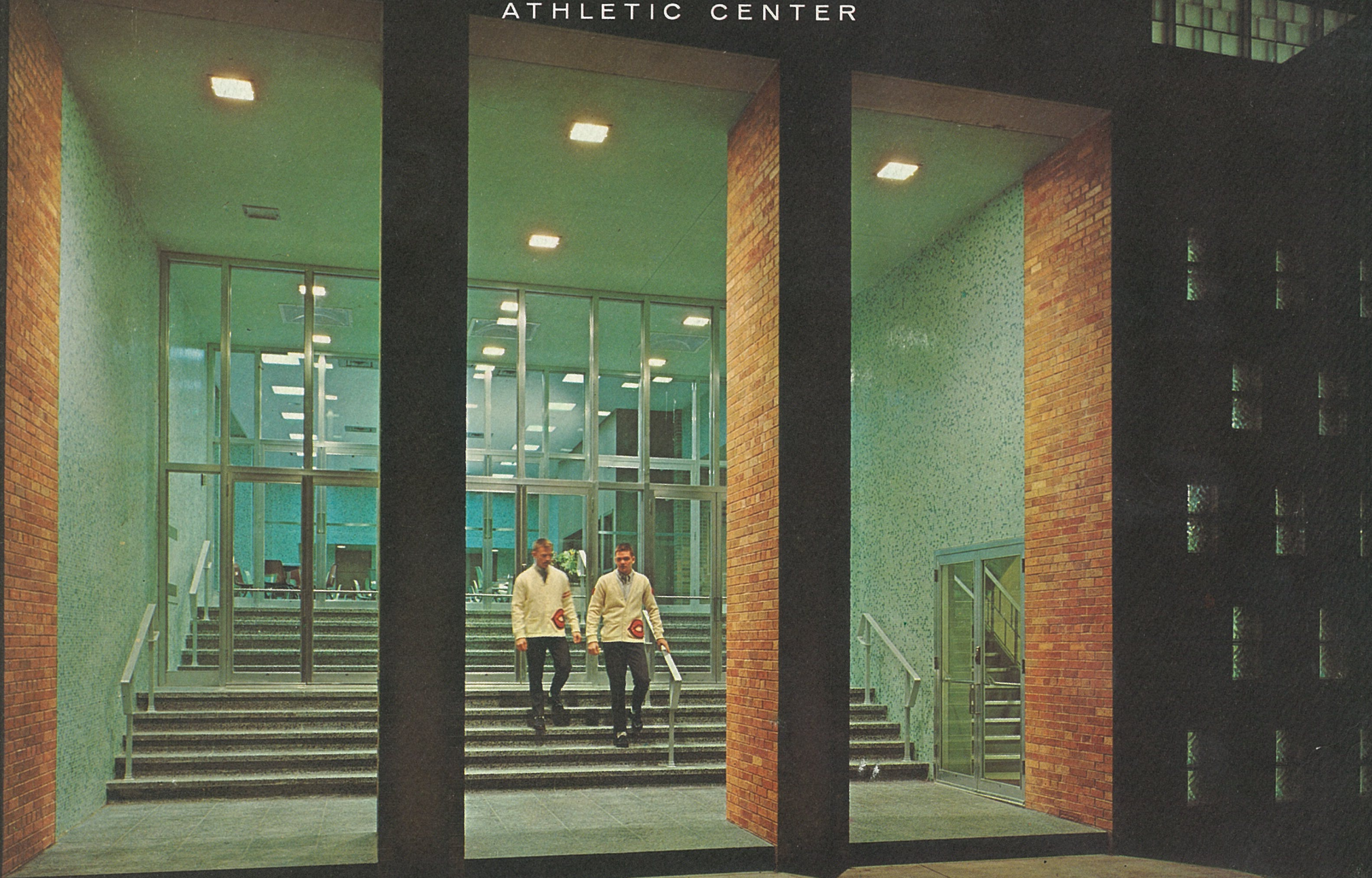
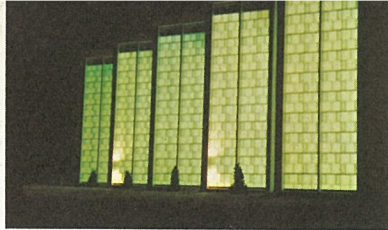


THE W. S. HOFFMAN MEMORIAL

ATHLETIC CENTER

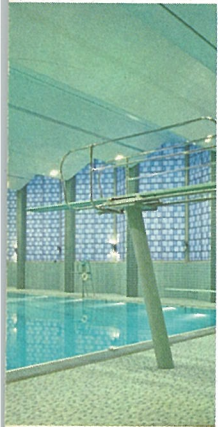


CAMPION JESUIT HIGH SCHOOL • PRAIRIE DU CHIEN, WISCONSIN



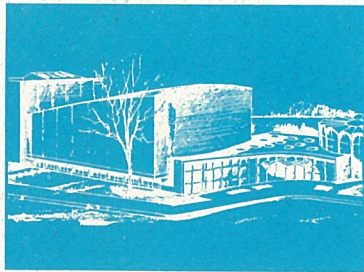
SECTION I

Dedication and Congratulations



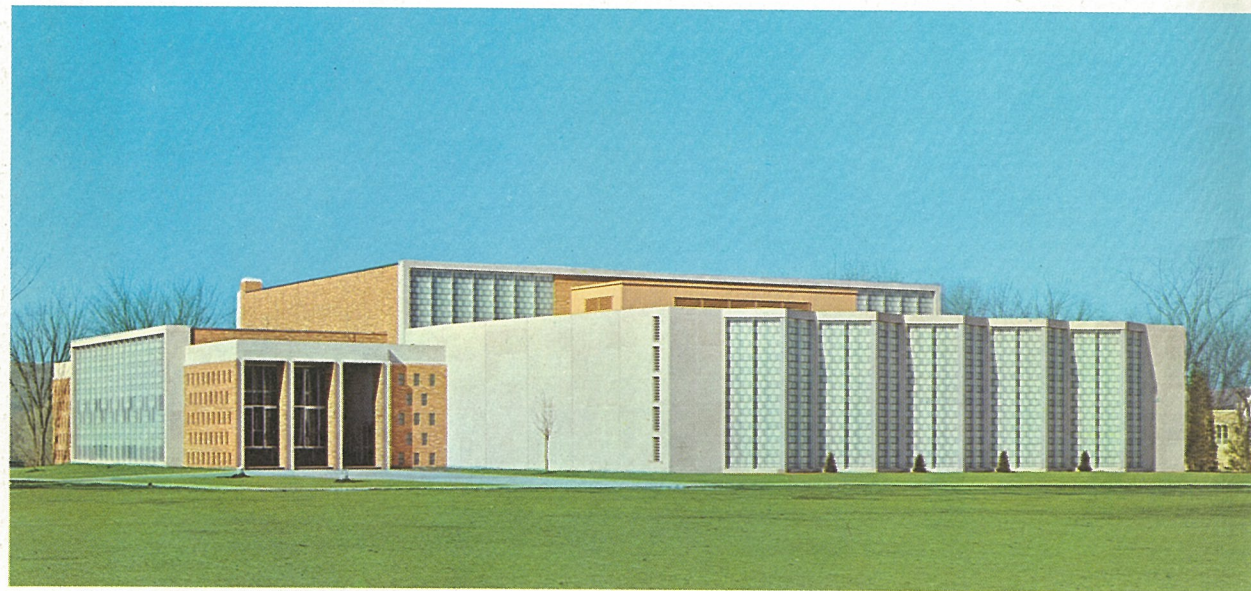
SECTION II

*Picture Tour of
the Athletic Building
and Present Campus*



SECTION III

*Campion's 100th Anniversary
Development Program*



The long-awaited Campion athletic and student center stands majestically on the southwest corner of Campion's expanding campus. In it are embodied the fulfilled hopes and dreams of the many people whose combined labor and generosity made it possible. This million-dollar project—The W. S. Hoffman Memorial Athletic Center is the third giant step in Campion's 100th Anniversary Development Program (1880-1980).

MIDWEST JESUIT ARCHIVES
4511 WEST PINE BLVD.
ST. LOUIS, MO 63108

St. L. U. 97-40



SECTION IV

Campion's Athletic History



"QUEST OF A CENTURY"

"One of the strong lasting influences has been that of Coach William S. Hoffman. Since his coming to Campion . . . generations of boys have experienced his kindly advice, his calm manner, his quiet manliness, his forceful strength of character . . . and whether it were on the field, or in the scholarly atmosphere of his office, they have carried away with them the budding hope that they might be like him. To have thus brought the impress of his character to bear on the thousands who have known him and learned from him . . . is Coach Hoffman's contribution to Campion."
(Campion Knight, 1947)

In 1911, Coach William S. Hoffman at the age of 29 came to teach, write, and coach all major sports at Campion College. With the closing of the college department (1923), he took on all of the major sports in the high school department and remained actively coaching Campion Knights to an enviable overall record of victories up to 1953 when he became Chairman of the Athletic Board. For over fifty years, then, his life has been Campion. *"Longer than any faculty member, Jesuit or lay, he has epitomized Campion and her ideals."* (Knight, 1962)

In dedicating this beautifully planned and executed student center-gymnasium-natatorium as "The W. S. Hoffman Memorial Athletic Center," Campion wants to ensure that his name, achievements, and personal legacy to Campion will never be forgotten.

Campion's "Quest of a Century" has been a part of every phase of his life. Certainly Coach Hoffman has played a great part in this almost century-old quest. With inspiration such as his to spur it on, Campion – ever in pursuit of greater achievements – will strive nobly to match and even excel its great past.

"Indeed Coach Hoffman is a living exemplar of the ideals of Campion. He is first and foremost a gentleman, a truly Christian soul whose every action is stamped with fairness and kindness, and whose name has become a hallmark for courtesy and consideration." (Campionette, 1955)

To Coach Hoffman it is not the game that counts, it is the way that game is played. If the athletic field is a tiny mirror of life, then that Hoffman spirit of guiding the whole man is not only the spirit of Campion's athletes, but it is the spirit of all Campion.

Never has admiration been better bestowed, never has such a dedication been more richly deserved, never has gratitude been better placed or more warmly given than this tribute of deep esteem and appreciation for all Coach William Stanislaus Hoffman has represented and will continue to represent.

The whole Campion family in all walks of life deems itself fortunate to have known him, to have been influenced by him and now to be able to bestow as a small return and token of its esteem and gratitude upon Campion's "Coach" – The W. S. Hoffman Memorial Athletic Center – forever.



Coach W. S. Hoffman

In declining to make final selection of the athletes for inclusion in Campion's partial listing of all-time greats (see pages 18 to 23), Coach Hoffman wrote the following remark so characteristic of the humble man that he is:

"There are so many loyal, excellent athletes who have contributed greatly to the success of our teams that it would be unfair for me to single out any ones for special mention since I owe them all a deep debt of gratitude for enabling me by their accomplishments to remain so many years their coach."

W. S. Hoffman

March 17, 1963



John F. Kennedy
President of the United States



THE WHITE HOUSE

WASHINGTON

March 29, 1963

Dear Father Kalb:

My congratulations to you and all the generous alumni and benefactors who have made possible the dedication of Campion's new athletic center and swimming pool.

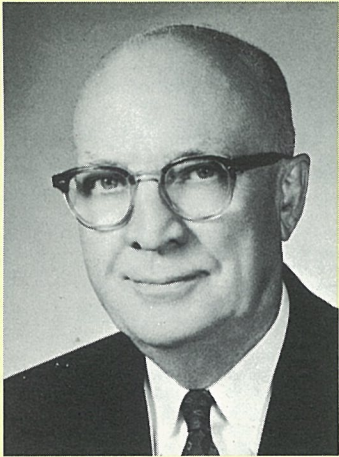
The program and facilities to promote physical strength and fitness that you have achieved at Campion are pacesetters in our efforts to provide for the needs of American youth.

It is a pleasure to extend congratulations also on Camp Campion, your new summer camp which will open this Summer. The use of your facilities on this year-round basis will provide a special opportunity for younger children to benefit from a directed program in sports and physical fitness.

Your sports and physical fitness programs are a part of your total excellent academic tradition under which Campion students earned the greatest number of National Merit Scholarships in Wisconsin this year. This balanced educational program is evidence of Campion's excellence in providing a well-rounded education for American youth.

Sincerely,

Reverend Howard E. Kalb, S.J.
Campion Jesuit High School
Prairie du Chien, Wisconsin



Ray W. Herrick

Campion owes a great debt of gratitude to Ray W. Herrick of Tecumseh, Michigan, Chairman of the Board of Tecumseh Products Company, and outstanding philanthropist. Through his generosity Campion is the recipient of the largest single gift in her history: one hundred and fifty thousand dollars toward the million-dollar cost of the new gymnasium-natatorium.

Mr. Herrick, a great admirer of the late Cardinal Mooney of Detroit and of the Jesuit system of education, is a self-made man whose own education ended at eighth grade. He was greatly influenced by Henry Ford for whom he worked during and after World War I and became ingrained with the Ford philosophy of production line assembly, incentive pay, and of manufacturing products better and cheaper. Starting Tecumseh Products during the difficult times of the early thirties, Mr. Herrick developed it into the largest manufacturer of refrigerant compressors in the world. His gift will always be sincerely appreciated by Campion.



Richard C. Roll

Gratitude is also due to Richard C. Roll, the man responsible for introducing Mr. Herrick to Campion. He is Tecumseh Products Company's Vice President in charge of its Lauson Engine Division (lightweight gasoline engines) and father of 1962 graduate of Campion, Christopher J. Roll.



March 29, 1963

Very Rev. Howard E. Kalb, S.J.
Campion Jesuit High School
Prairie du Chien, Wisconsin

My dear Father Kalb:

It is a real pleasure and honor to be able to bless the new "W. S. Hoffman Memorial Athletic Center" at Campion. Being an alumnus of a Jesuit preparatory school myself, I can appreciate what this new building means to the faculty and students.

Mr. Hoffman, being a coach for forty years, must feel a little bit frustrated to realize the glory and grandeur of this new building in which he was never able to function.

Nevertheless, as an outstanding Catholic layman, whose ideals have influenced many thousands of boys through his coaching years at Campion, his name will be preserved through uncountable generations yet to enroll at Campion. May he live many more years to enjoy the outstanding positions held in the world today by the thousands of boys over whom he had such a beneficent influence.

Wishing you continued success in your great work, I am

Devotedly in Christ's name,

JPT:lr

John P. Treacy
JOHN P. TREACY
Bishop of La Crosse





Left to right:

Very Reverend Howard E. Kalb, S.J.,
President of Campion Jesuit High School;

Very Reverend John J. Foley, S.J.,
Provincial of the Wisconsin Province of the Society of Jesus;

Reverend Eugene E. Zimmerman, S.J.,
Father Minister and Superintendent of Campion Jesuit High School.

CAMPION JESUIT HIGH SCHOOL

Prairie du Chien, Wisconsin

May 4, 1963

Office of the Rector

Dear Friends of Campion,

Have you ever experienced the thrill of a dream come true? If you have, then you can appreciate our delight in the completion of our new Athletic Center. And the reality; its beauty, its facilities, its provisions for exercise and relaxation, even surpass our fondest expectations.

To Almighty God, we humbly say our prayer of thanks. To you, our generous benefactors and friends, we are forever indebted. For you, all of the Jesuits at Campion offer their Masses and prayers, begging God to bless you abundantly for being so good to our boys and all of us.

We are proud to name the new edifice: THE W. S. HOFFMAN MEMORIAL ATHLETIC CENTER. It is a token of our appreciation of Mr. William Hoffman, in whom we find a living example of all the ideals for which Campion stands. During his fifty years at Campion, as teacher, author, and coach, he has influenced and inspired the youthful minds and hearts of thousands of Campion men.

It is this same influence and inspiration that we hope will continue to guide the sons of Campion. Caught up in the spell of his spirit, we look hopefully to the future, the "Quest of a Century". Building on the glories of the past, we promise to strive for an even greater Campion of the future.

May the Good Lord bless each and every one of you.

Most gratefully yours,

Howard E. Kalb, S.J.

Howard E. Kalb, S.J.
President

PROVINCIAL'S RESIDENCE

SOCIETY OF JESUS

3109 NORTH LAKE DRIVE
MILWAUKEE 11, WISCONSIN

WISCONSIN PROVINCE
EDGEWOOD 2-2461

March 26, 1963

Reverend Howard E. Kalb, S.J.
Campion Jesuit High School
Prairie du Chien, Wisconsin

Dear Father Kalb:

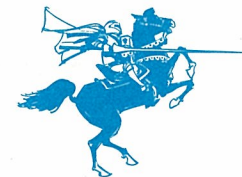
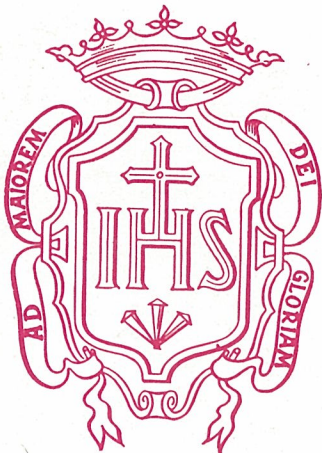
My sincere congratulations to you and all at Campion on the occasion of the dedication of Campion's new gymnasium.

At a time when the President of the United States has stressed the importance of physical fitness for all citizens, this excellent gymnasium stands as a reassuring expression of Campion's commitment to provide the very best physical as well as moral and mental development for its students.

Our thanks go out especially at this time to the many friends, relatives and alumni whose generous gifts made this building a reality.

Sincerely yours in Christ,

John J. Foley, S.J.
John J. Foley, S.J.
Provincial



"QUEST OF A CENTURY"

DEDICATION PROGRAM

of the W. S. Hoffman Memorial Athletic Center

SATURDAY AFTERNOON, MAY 4, 1963

PROCESSION:

Ecce Sacerdos..... C. A. Zittel

WELCOME AND ADDRESS

Very Reverend Howard E. Kalb, S.J., President of Campion
 Coach Wm. S. Hoffman, Chairman of the Athletic Board
 His Excellency, The Most Reverend John P. Treacy, S.T.D.,
 Bishop of La Crosse, Wisconsin

BLESSING AND DEDICATION

His Excellency, The Most Reverend John P. Treacy, Officiating

Ministers of the Blessing:

- The Very Reverend Monsignor James P. Finucan,
Chancellor of the Diocese of La Crosse, Wisconsin
- The Very Reverend Robert W. Lambeck, S.J.
Assistant Provincial of the Wisconsin Province of the
Society of Jesus
- The Right Reverend Monsignor Paul J. Monarski,
Pastor of St. John's Church,
Prairie du Chien, Wisconsin
- The Reverend Earl J. Burns, S.J.,
Pastor of St. Gabriel's Church,
Prairie du Chien, Wisconsin

SOLEMN BENEDICTION OF THE BLESSED SACRAMENT

His Excellency, The Most Reverend John P. Treacy.....Celebrant
 The Very Reverend Robert W. Lambeck, S.J.....Deacon
 The Right Reverend Paul J. Monarski.....Subdeacon
 The Very Reverend James P. Finucan.....Master of Ceremonies

Adoro Te Devote Choir Traditional
Tantum Ergo Community J. Gruber
Jubilate Deo Choir C. Rossini



Representing the Senior Class of '63 who planned and produced this souvenir brochure, John D. Campbell, stands in front of the senior's residence — prestigious Marquette Hall.

Campion Jesuit High School

STUDENT COUNCIL

Prairie du Chien, Wisconsin

May 4, 1963

Office of President



On behalf of the Campion Students, I would like to express our most sincere appreciation and thanks to all the generous parent, alumni, and benefactor friends of Campion responsible for this wonderful new million-dollar athletic center.

This athletic center uniquely provides a true student union -- a place where the entire student body is united in healthful entertainment and exercise. The value of such a contribution to student life in a residential school like Campion can hardly be measured or expressed by words.

Gratifying to the student body, in addition, is the selection of the dedicatory name -- that of Coach W. S. Hoffman whose achievements all of the student body were hoping would be forever memorialized as an inspiration, challenge, and goal for Campion Knights of the present and the future.

And so, the graduating class of '63, as our parting gift to Campion, has produced this handsome brochure as an expression of the students' appreciation for your generous shaping into reality this impressive and inspiring building -- another milestone in Campion's great past and greater future: in Campion's "Quest of a Century."

John Campbell

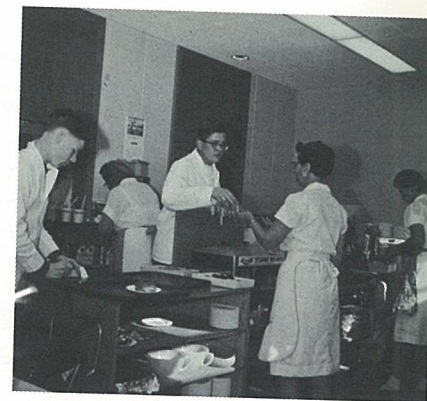
John Campbell
 President of the Class of '63
 President of the Student Council
 (1962-1963)



"QUEST OF A CENTURY"



East to west view of spacious lobby-lounge with a sweeping view of campus, golf course, and Wisconsin River bluffs.



Student waiters and Brother Harold T. Stockley, S.J.'s efficient staff of chefs, deliver the goods.



West to east view of lobby-lounge looking toward entrance of aluminum and glass.

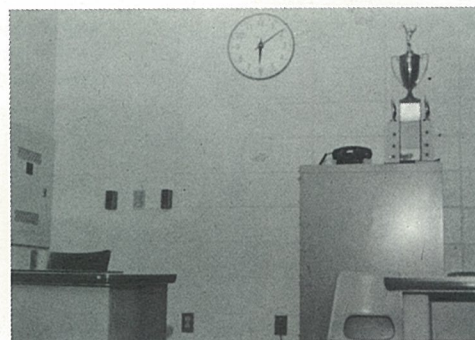
Entering the student union through an expanse of glass and aluminum doors and viewing the shiny terrazzo-marble floors and gleaming walls of venetian tile and natural walnut paneling, one is struck by the atmosphere of relaxation they achieve. The dual-purpose lounge and lobby provides an attractive and comfortable setting where students and visitors may gather and relax. Situated at the west end are complete kitchen facilities for light meals and snacks. The student union lounge is the social focal point and an important asset to the entire campus.



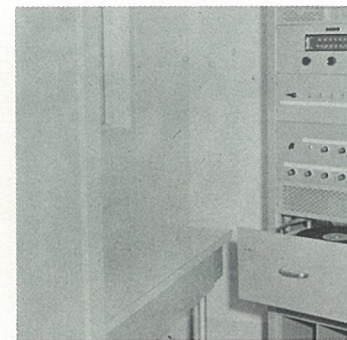
An after class snack

The gymnasium area is light and spacious, with three practice courts and the main court delineated on its highly varnished floor. Banks of folding bleachers seat more than 1200 spectators. The floating acoustical cane-fiber ceiling aids in sound control. At the south end, the athletic director's office and a separate radio announcer's booth provides a relaxing atmosphere of music for both the lounge and gym floor areas when desired. The basketball hoops and their supports can be retracted up toward the ceiling by electric controls located in the athletic director's office. Gym lights also may be dimmed for special occasions.

Two electric scoreboards aid players and spectators to follow the score with ease. From both the east and west walls light streams through attractive thin glass-block window walls high above the bleacher sections.

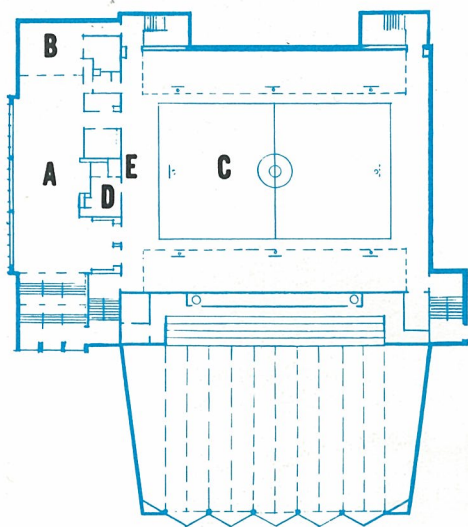


Athletic Director's office.



Announcer's booth and radio, phonograph, public address system for lounge and gymnasium area.

Varsity gymnasium area (C), with bleachers to seat more than 1,250 spectators.



Upper level of athletic center

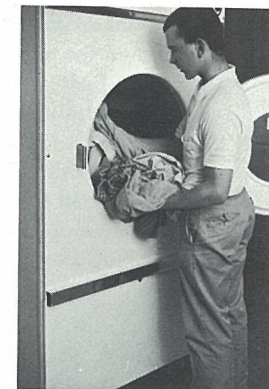
- A — Lounge
- B — Snack kitchen
- C — Basketball court
- D — Athletic director's office
- E — Announcer's booth





Locker room with 480 full-length steel lockers, each of which is continuously ventilated by an exhaust fan system in the floor. (A)

Central control area, athletic store counter and display case, and intramural league bulletin boards. (B)



Large commercial-type automatic washer and drier for use of student managers in caring for varsity and league uniforms and equipment. (F)



One of seven well-planned lavatories in the building. (C)

The locker areas (equipped with speaker system for paging individuals or making announcements) are divided into four general zones for the convenient functioning of the groups using them.

1.) Varsity area:

Varsity dressing room, cage and storage areas, shower and drying room, medical room, light exercise room, wrestling room, and coaches' office, bath and lavatory.

2.) Faculty area:

(Doubles for use of faculty and game officials) locker room, lavatory, and shower room.

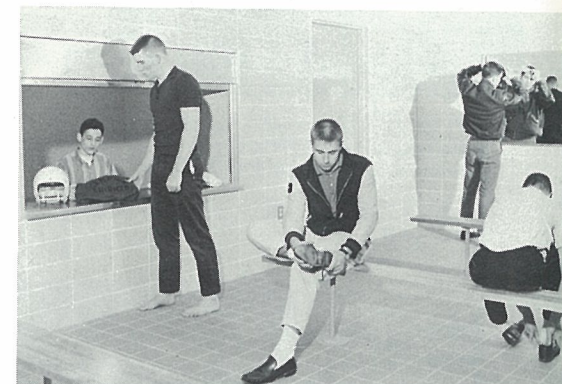
3.) Freshmen area:

Locker area, lavatory, shower, and drying room (doubles as locker room and shower accommodations for visiting teams).

4.) Upper-classmen area:

Sophomore, junior, senior students' locker, shower, drying room, lavatory, athletic goods store, laundromat, cage areas, and equipment storage rooms.

The majority of these rooms have quarry-tile floors and ceramic-wall tile of cheerful and harmonizing color selections.



Varsity dressing room and window to equipment cage area. (E)

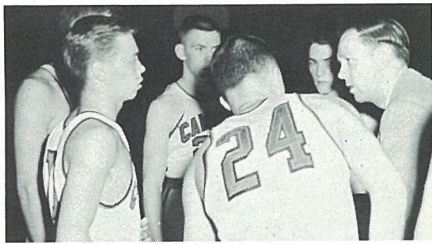
Wrestling room. (D)



Coach R. H. Lundstrom
Head Basketball Coach

Laundromat room — four automatic coin-operated washers and driers for use of students. (G)





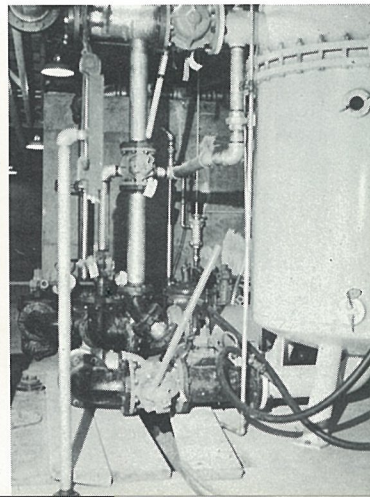
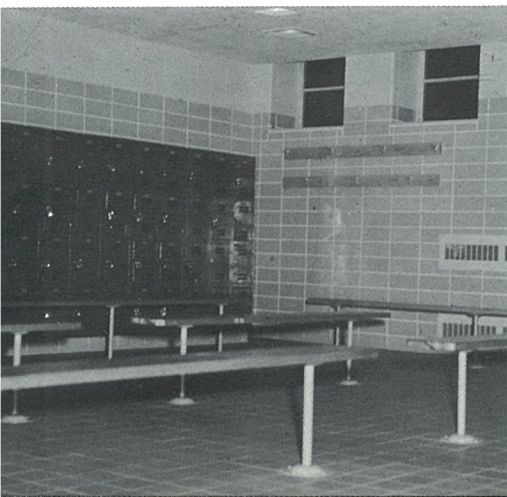
Coach R. W. Halstead — Junior varsity basketball, cross-country, and track coach.

Life at Campion has been considerably altered by the advent of this much-longed-for facility. This stunning 75'1" by 42'1" ceramic tiled pool varying in depth from 3 to 12 ft. is equipped for swimming and diving competition with 6 removable racing take-off platforms at the shallow end and turning plates at the deep end, lane marker float lines, one-meter and three-meter diving boards, a gallery for 250 spectators, and an announcer's amplification system.

The pool, equipped also for water polo, is illuminated by 22 underwater lights. Moreover, for comfort as well as safety, the surrounding deck area is kept dry and comfortably warm by radiant heat coils. The shower rooms provide a selection of cold water and of a mixed blend carefully controlled from regulators in the pool supervisor's glassed-in office.

During the day the pool is bathed in daylight streaming through the beautiful plaited east wall of tinted glass block.

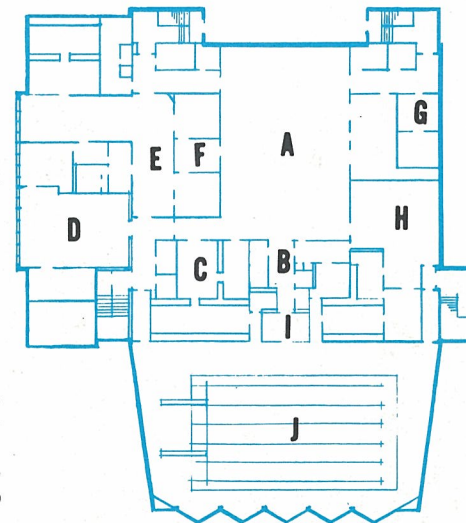
Freshman Locker Room—180 lockers for freshmen swimmers. (H)



Pool filtration system in basement area below diving boards. Approximately 450 gallons of water are filtered and returned to the pool every minute.



View across pool to pool supervisor's office and showing gallery and entrances to pool area from both shower rooms on left and right of office.



- Lower level of athletic center**
- A — Locker room area
 - B — Central control counter and store
 - C — Lavatory
 - D — Wrestling room
 - E — Varsity dressing room
 - F — Laundry
 - G — Student laundromat
 - H — Freshmen locker room
 - I — Pool supervisor's office
 - J — Swimming pool

CAMPION THE SCHOOL

Club Room Arcade and Freshman Gymnasium.



Interior of Joyce Kilmer Memorial Library.



Our Lady of the Angels Student Chapel.



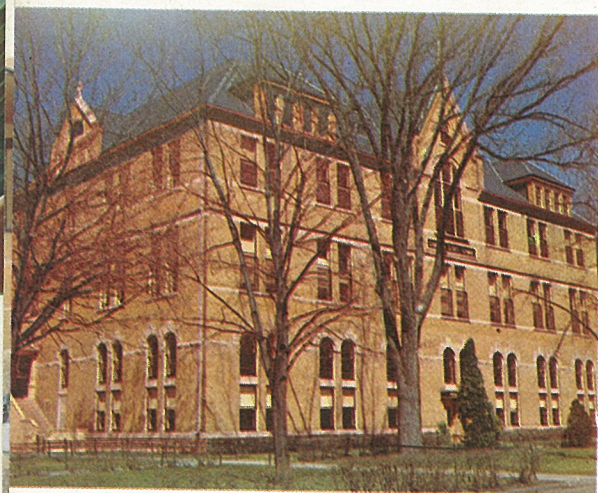
Campion is a Jesuit residential college preparatory school at Prairie du Chien, Wisconsin, in the beautiful Hiawatha Valley, where the Mississippi and Wisconsin rivers converge.

The campus itself is graced with beautiful buildings. Lucey Hall, housing 248 sophomores and juniors, provides modern semi-private accommodations. Marquette Hall lends a homelike, private atmosphere to all college bound seniors. The large, inspiring students' chapel provides day and night personal contact with Christ. Campion Hall, connected with the club room and gymnasium, houses freshmen dorms, Kilmer Library, classrooms, recreation facilities, and science laboratories. Kostka Hall encompasses administration, classrooms, student auditorium, another gym, and a radio station. Loyola Hall contains the student dining hall and kitchen, postoffice, and a school supply store. Lawler Hall includes the President and Rector's office and Jesuit chapel and complete living quarters. The culmination of campus beauty is the new million-dollar gymnasium-natorium.

Campion's student enrollment has reached 535 resident students and 55 day students. This enrollment consists of students from 49 states, and at the present, Canada, Chile, Saudi Arabia, Korea, and the Philippines. The school is staffed by 40 Jesuits and 16 lay members. This high percentage of Jesuits on the staff provides the individual student with the uniquely convenient opportunity for spiritual and intellectual guidance.

Since its founding in 1880, the goal of Campion has been to produce Christian men . . . MEN in the full sense of the word: spiritually, intellectually, and physically. In other words, Campion produces men who understand the world and the various people who make up society. From this understanding, a Campion man acts on his convictions in recognizing his moral duties and fulfilling them.

One of the strongest facets of Campion's training is the spiritual development of its students; the student body attends Holy Mass daily and also has access to the sacraments in Our Lady of the Angels chapel. Five to eight



Campion Hall — Freshmen's dormitory, classrooms, and location of the Joyce Kilmer Library.



Kostka Hall — Administration and Alumni Offices, classrooms, gymnasium, radio studios, military department, and Theatre.



Loyola Hall — Dining Hall, Campus Store, and Post Office.



Lawler Hall — President's offices and reception parlors, and Jesuit Faculty Residence.

Marquette Hall — Seniors' Residence Hall.



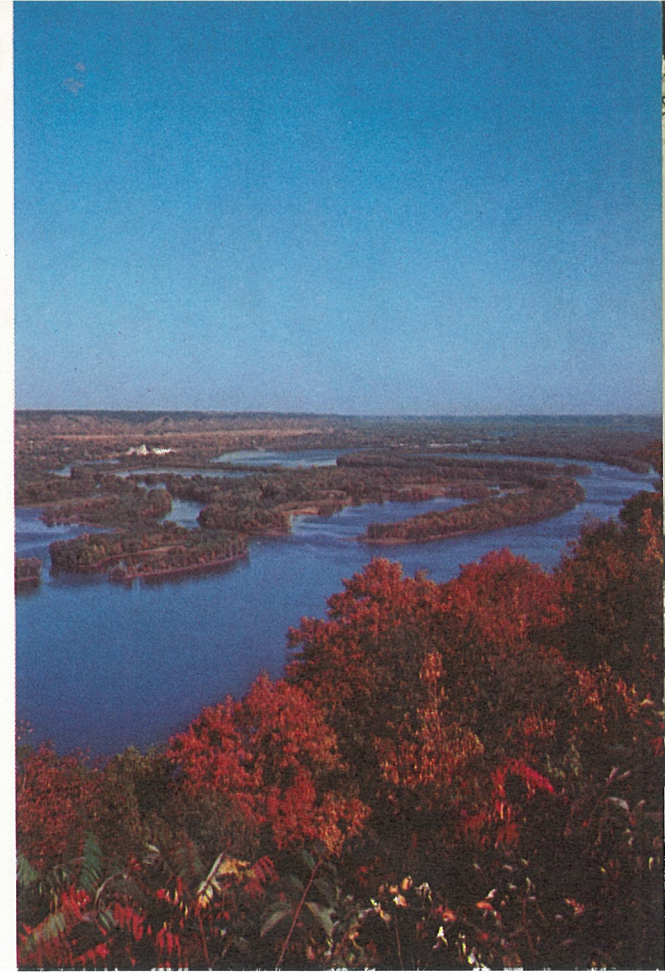
Lucey Memorial Hall — Sophomore and Junior Residence.



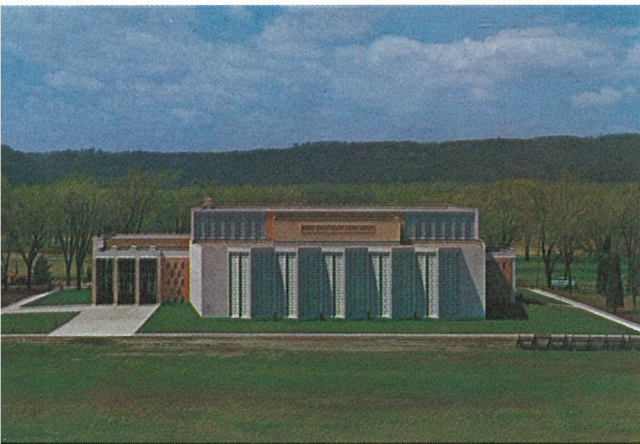
Jesuits live with the students in each dormitory hall for ready counselling. The Campion Sodality exists on campus for each student who is striving to pursue an even fuller living of his Catholic life. In this way, each student leaves Campion LIVING his Faith — a set of values that will be challenged in many ways by the ideals of the modern world.

The field in which Campion has solidly established itself around the nation is academics. The famous Jesuit system of liberal education is the basis for a curriculum ranging from the classical to the scientific. The students are grouped in educational levels determined by ability and ambition. Students who excel in the field of languages, mathematics, or the sciences are eligible for accelerated courses in these particular fields. In this way Campion achieves its basic purpose of providing each student with the necessary background for his task of adapting himself to the college course of his choice. Each student participates in a system of education — a system that is dynamic, not static.

Campion's athletic facilities are more than adequate for the developing of the individual student's athletic talents in the sports of his choice. Through the vast system of athletics here, the student can gain the proper perspective of the importance of his physical development in relation to his complete development as a Christian man. Campion's varsities compete with those of other schools from many states in football, basketball, baseball, track, tennis, golf, cross country, and, in the near future, swimming. And, as the athletic section points out, Campion's spirit and accomplishments are a winning tradition. Intra-mural teams also play an important part in the athletic program. There are organized leagues in football, basketball, baseball, and hockey; and, in season, the nearby bluffs provide excellent skiing and tobogganing. The new athletic center will obviously play an integral part in completing and rounding out an already extremely active athletic program. And so, we believe that, as a training ground for the soul, the mind, and the body, Campion is indeed a winning tradition.



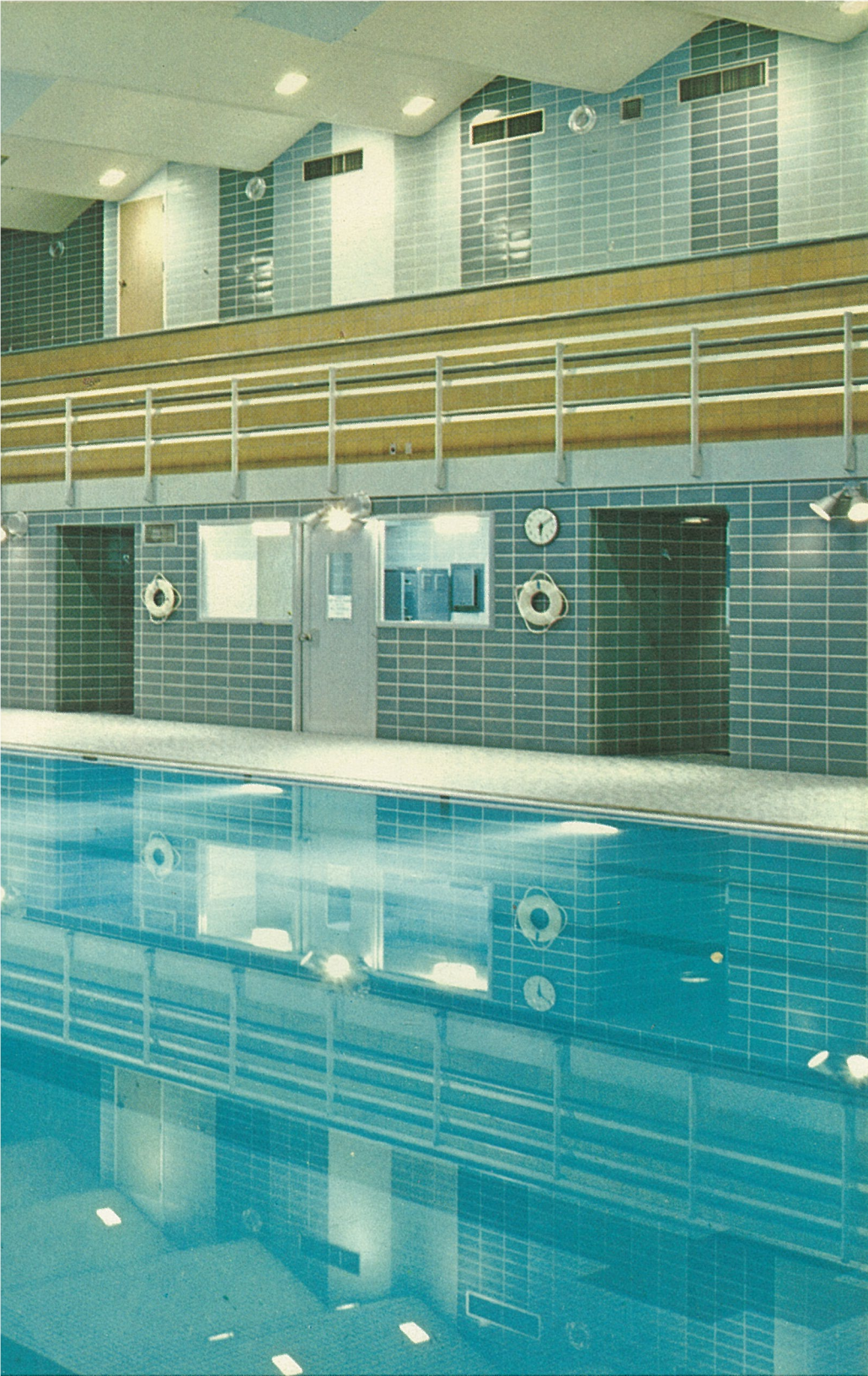
Scenic view of the beautiful Wisconsin-Mississippi River Valley in which Campion's campus is situated.



The W. S. Hoffman Memorial Athletic Center — Swimming pool, snack lounge, and gymnasium.







Carefully designed from the acoustical point of view, Champion's pool has not duplicated the annoying and tiring noise level of most indoor pools. The use of angled ceiling and wall surfaces of acoustically absorbent materials achieves an amazingly restful lack of noise reverberation and thus, even music from the pool supervisor's control center can be thoroughly enjoyed without distortion or strain.

The modern, cheerful, relaxed air of the pool area is further achieved by the tile colors selected for walls, deck, and pool. Light blue tile in the pool enhances the natural blue of the water with a beautiful effect. The deck and wall tiles run in a pleasing variety of cool aqua shades with accents of charcoal, blue-green and white.



Swimming pool view looking toward east "Thinlite" glass wall.

Swimming pool interior looking toward west wall and spectator gallery.

CAMPION'S 100-ACRE CAMPUS

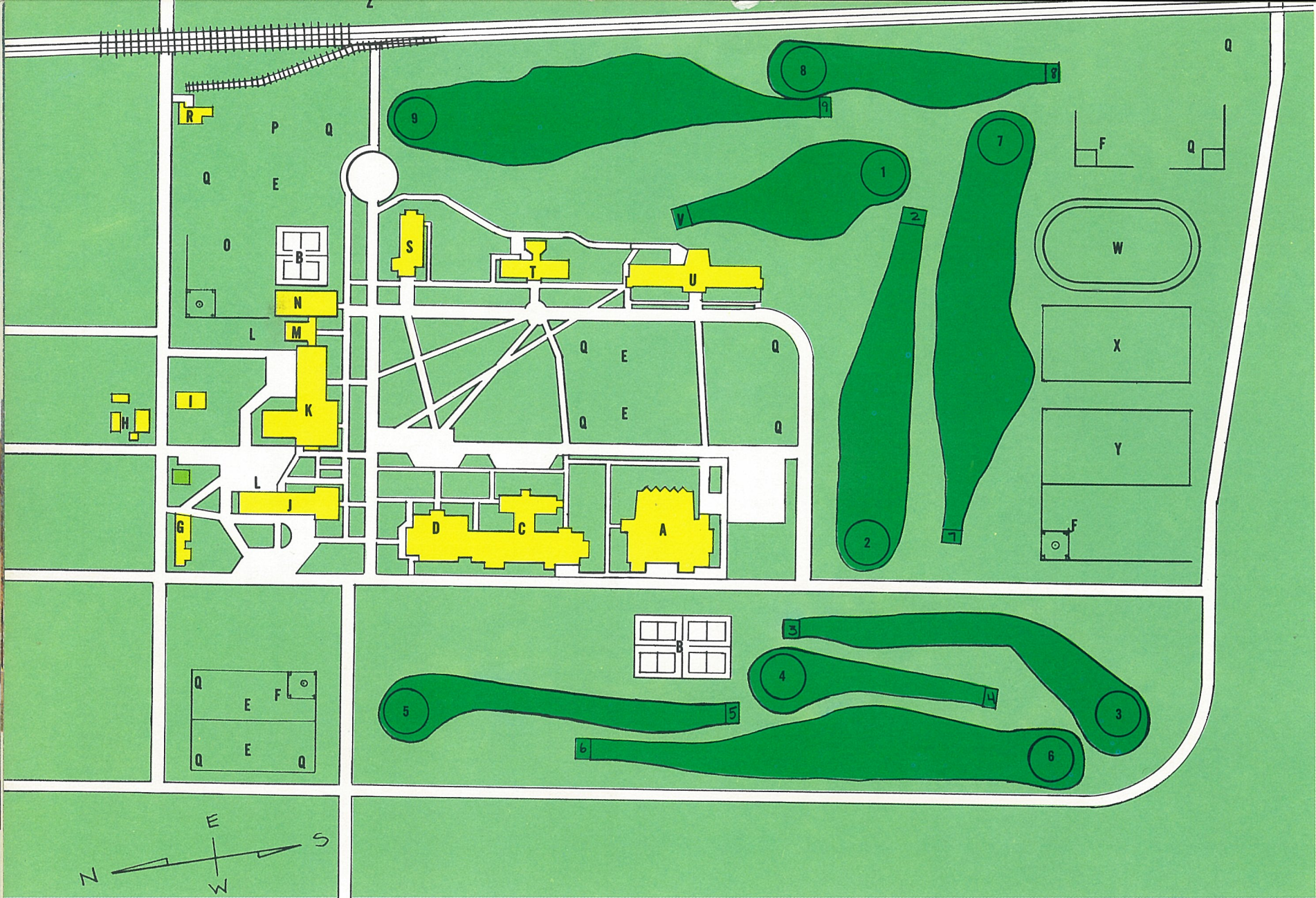
- A** The W. S. Hoffman Memorial Athletic Center (Gymnasium, Natatorium, and Lounge)
- B** All-Weather Tennis Courts
- C** Lawler Hall—Jesuit Faculty Residence
- D** Loyola Hall—Dining Hall, Campus Store, and Post Office
- E** Football Fields
- F** Baseball Diamonds
- G** Infirmary

- H** Maintenance Buildings
- I** Music Hall
- J** Kostka Hall—Administration, Campus Theatre, Classrooms, Small Gym
- K** Campion Hall—Joyce Kilmer Memorial Library, Classrooms and Science Labs, Freshmen Recreation Room, and Dorms
- L** Hand Ball Courts
- M** Club Room

- N** Freshmen Gymnasium
- O** Winter Ice Hockey
- P** Winter Skating Rink
- Q** Spring Softball Diamonds
- R** Power House
- S** Our Lady of the Angels Chapel
- T** Marquette Hall — Senior Residence Hall
- U** Lucey Memorial Hall — Sophomore and Junior Residence Hall

- V** First tee of 9-Hole Golf Course
- W** *440 Yard Cinder Track and Field Area
- X** *Varsity Football Field
- Y** *Varsity Football Field (Practice Field)
- Z** Campion Bluffs Area of Campus (¼ mile East of Main Campus)—Hiking, Ski Slope, Toboggan Run

*Under construction





"QUEST OF A CENTURY"

1880-1980

Campion's 100th Anniversary Development Program

Started in 1953 — a 27-year program for excellence

Advancing proudly in its dynamic "Quest of a Century," Campion has embraced a comprehensive program of development aimed at excellence, the final phase of which is projected for completion in time for the Centennial celebration in 1980.

The program is composed of three intensive phases which will greatly enhance the physical facilities of the school, improve the academic facilities, and establish an endowment.

The school must expand its facilities and raise its academic standards to make certain that it will keep stride with other fine independent secondary schools which are forging ahead to meet the call for greater excellence.

Campion intends to make certain that its students will continue to meet the entrance requirements of the nation's leading colleges in every respect. Hence, the multi-million dollar development program crowning the "Quest of a Century."

The first half of the program, which was initiated in 1953, has been completed with the construction of Lawler Hall (Faculty residence), Lucey Hall (student residence), and the Athletic Center. The other advancements which have already been realized are indicated in the outline at right.

I. Physical Facilities:

1. BUILDINGS:

- . . . Faculty Building (1954)
- . . . Soph-Junior Dorm (1959)
- . . . Athletic Center (1963)
- . . . Freshman Dorm
- . . . Administration-Classroom Building
- . . . Auditorium-Music Hall

2. ATHLETIC IMPROVEMENTS:

- . . . Larger Coaching Staff (three coaches added to staff by '63)
- . . . Hoffman Field: baseball—football—track
- . . . Tennis courts (four new added in summer, 1963)
- . . . Improved golf course (summer, 1963)

3. CAMPUS BEAUTIFICATION:

- . . . New roads (summer, 1963)
- . . . New sidewalks (1960 and 1963)

II. Academic Facilities

1. Language laboratory
2. New science laboratories
3. A complete audio-visual department
4. Expansion of library holdings

III. Endowment Establishment

1. To provide increases in faculty salaries for lay faculty members
2. To provide more scholarships for students (scholarships doubled to 10 in 1963)

A program such as this, based on the proven achievements of Campion and built on the solid foundation of more than eighty years of accomplishments in Campion's proud tradition of forming Catholic leaders, is the most ambitious the school has ever undertaken. The fulfillment of this program will depend upon the continual enthusiastic participation of the greatest possible number of parents, alumni, and friends who believe in Campion and Campion's challenging "Quest of a Century."



"QUEST OF A CENTURY"

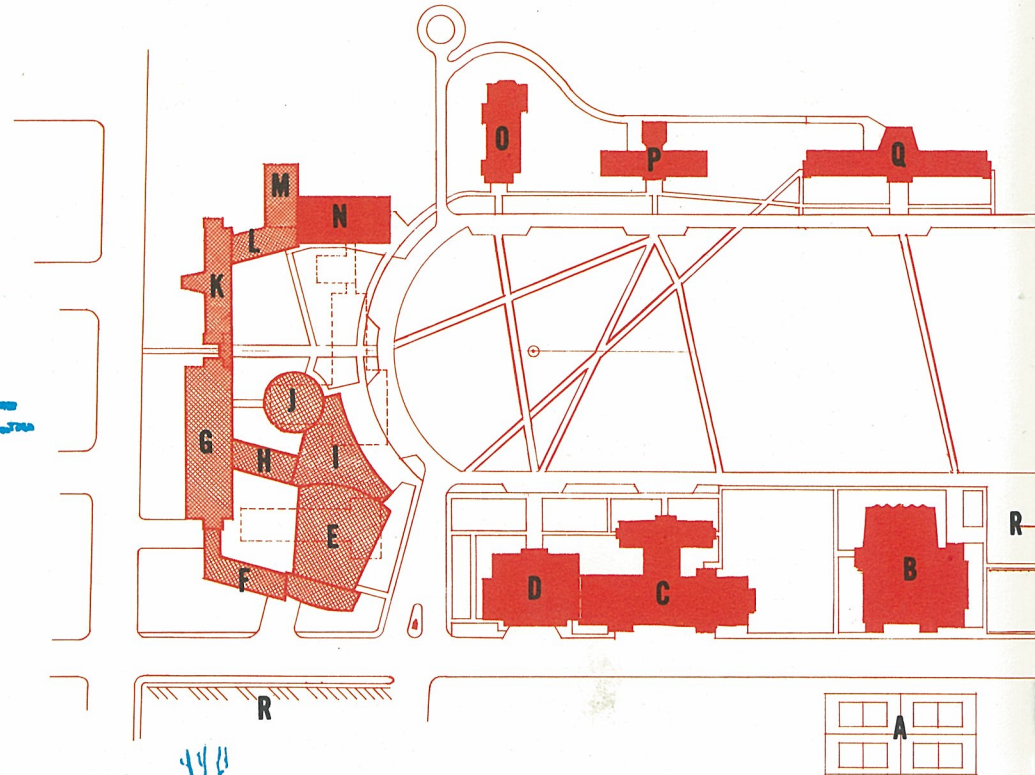
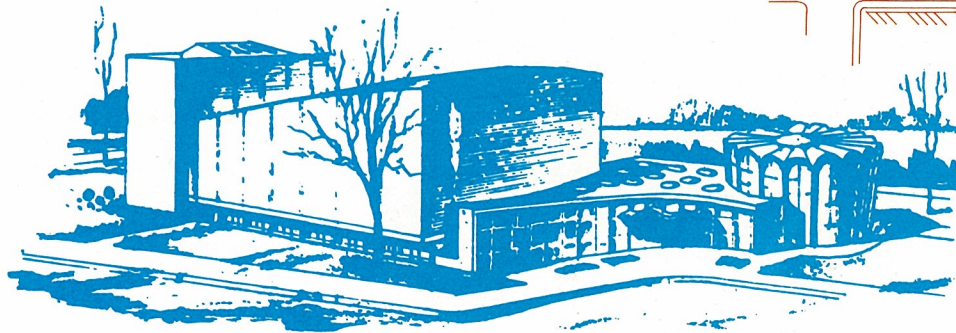
Freshman Division Building projected to be built about 1968 includes bed-rooms for four students each, large common study hall, recreation rooms, auxiliary athletic, locker, and shower rooms connected to the north end of the present freshman gymnasium. (K, L, M)



CAMPION



Classroom-Laboratory Building projected for 1975 includes twenty classrooms, science labs, electronic language instruction lab, lay teachers' lounge and offices. (G)



Campus theatre, music department, lobby-reception, administration, and library complex projected for the centennial year of Campion — 1980. This building group includes a glassed-in lobby-reception area overlooking the campus and serving as a common lobby for theatre, library, and administration area. Music department with practice rooms, instrument storage, and music director's office links the classroom building with the backstage area of the campus theatre. This building complex is completed by a circular-shaped Joyce Kilmer Library with stack areas around the center core and study areas around the outer, glass-walled perimeter. (E, F, H, I, J)

CAMPUS OF THE FUTURE

The first phase of Campion's 100th Anniversary Development Program involves the updating, improvement, and expansion of Campion's physical plant to provide outstanding facilities for a secondary Catholic education second to none. Campion's "Quest of a Century" is demonstrated by the fine facilities already built, especially in the last eight years: Lawler Faculty Residence in 1955, Lucey Memorial Residence Hall in 1958, and most recently The W. S. Hoffman Athletic Center in 1963.

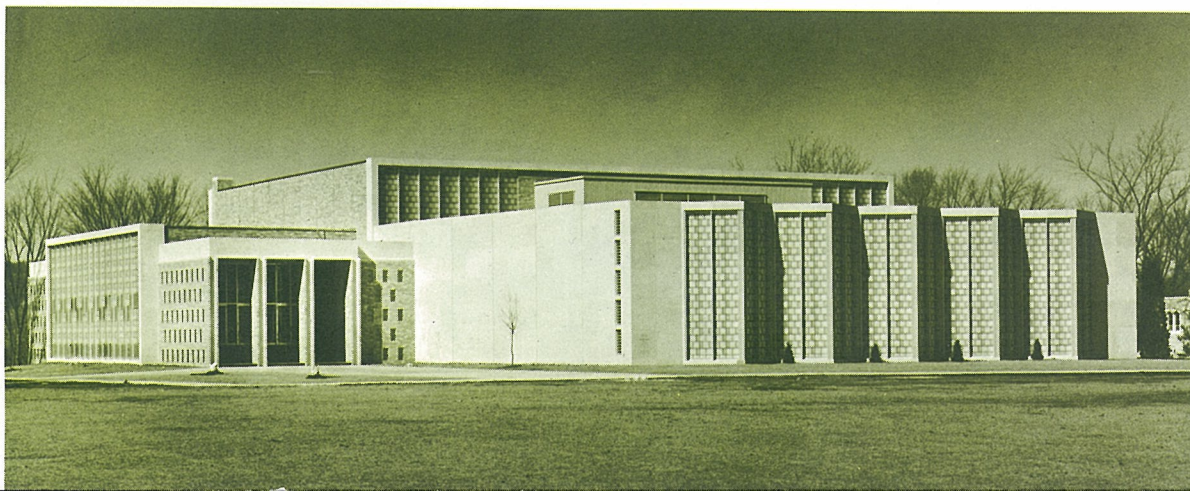
With great pride in these fine achievements and with renewed confidence, the Campion family looks forward to the thrilling challenge of the next seventeen years — toward the celebration of Campion's first one-hundred years of progress, service, and achievement.

- | | |
|--|---|
| A Tennis Courts (1963) | N Freshman Gymnasium |
| B The W. S. Hoffman Memorial Athletic Center (1963) | O Our Lady of the Angels Student Chapel |
| C Lawler Hall—Jesuit Faculty Residence (1955) | P Marquette Hall—Senior Residence Hall |
| D Loyola Hall—Dining Hall | Q Lucey Memorial Hall—Sophomore-Junior Residence Hall (1958) |
| E Campus Theatre (1980)* | R Parking Area |
| F Music Department (1980)* | S Golf Course (Improved, 1963) |
| G Classroom—Science Laboratories Building (1975)* | T The W. S. Hoffman Athletic Field Area (1972)* |
| H Administration Wing (1975)* | |
| I Central Lobby-Reception Wing (1975)* | |
| J New Joyce Kilmer Library Wing (1975)* | |
| K Freshman Division Building—Residence Wing (1968)* | |
| L Freshman Division Building—Recreation-Study Hall Wing | |
| M Freshman Division Building—Athletic Department Wing (Shower, Locker, Equipment Rooms) | |

*Anticipated Completion Date

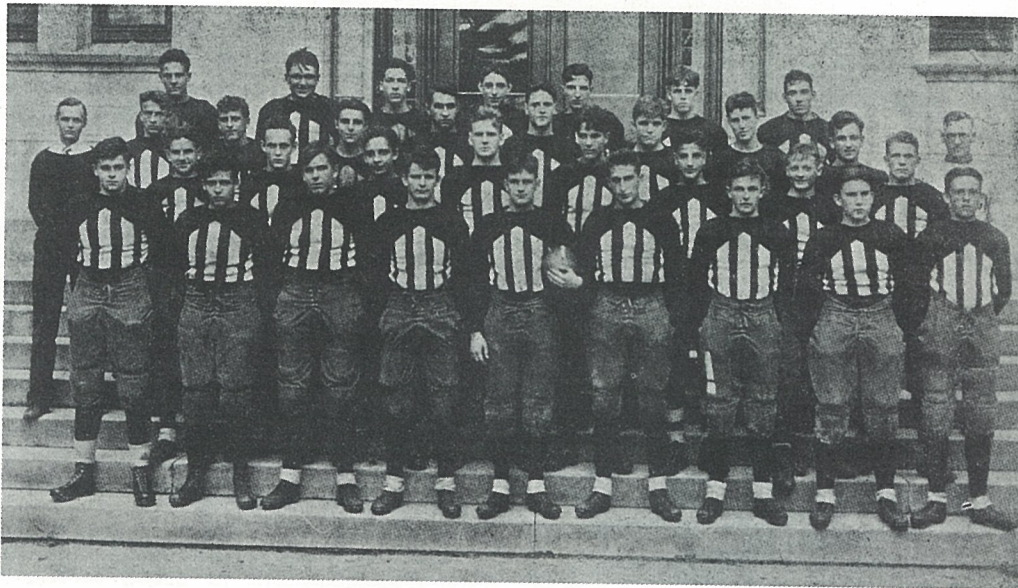


Lucey Memorial Hall — provides study, recreation, and residential facilities for 238 sophomores and juniors in semi-private rooms and accommodations for eight Jesuit faculty supervisors. Its quality construction and facilities rival the best of college residence halls.



The W. S. Hoffman Memorial Athletic Center — a student recreational and athletic facility beautifully executed and suggestive of the other fine buildings to be built to achieve the ambitious physical phase of Campion's dynamic "Quest of a Century."

HIGHLIGHTS OF CAMPION'S ATHLETIC PAST



Top row, left to right: G. Dunlap, D. Haecker, W. Findlan, R. Pfefferle, D. O'Hara, G. Connors, L. Schaffner. **Second row**: I. Schiek, E. Pfefferle, R. Scholl, W. Plank, J. Mulheirn, R. Galvin, E. Printy, E. Stoffel. **Third row**: Manager Garvy, J. Moon, J. Campbell, W. Petravicz, W. Cosgrove, A. Averill, G. Sylvestri, J. Augenstein, R. Cantillon, Coach Hoffman, **Bottom row**: J. O'Connor, W. Murphy, F. Radke, J. O'Connel, Capt. Walsh, A. Cameron, H. Hodgins, P. Murray, F. Scully.

The year 1928 brought to Campion its first undefeated team with a 9-0-0 record. Eight of these victories were shutouts as Campion outscored its opponents 275-6. The captain of this great team was William Walsh.

The 1941 team duplicated the feat of the '28 team with an identical record of 9-0-0. Campion again held eight opponents scoreless in rolling up 174 points to the opponents' six. Captain and quarterback of this outstanding team was John "Dug" Doyle. Halfbacks were Joe Horwath and Walt Pomierski, both of whom fit Campion's pattern of power running very well. George Hutter filled out the backfield. The line was anchored by center Earl Hamlin. Guard positions were manned by John Flavin, a tremendous downfield blocker, and Jack Hynes, a vicious tackler. Ed Montanus and Mark Buchheit, the tackles, were noted for stopping enemy plays before they started. At ends Coach Hoffman had Lou Thorne, a dynamic blocker, and Fred King, top pass-catcher for the team.



Coach Hoffman enjoys one of "Paddy" Driscoll's (former coach of the Chicago Bears) quips at a Campion Fathers' Club banquet.

"Mr. Campion" came to this school in 1911. In 41 years of coaching, Mr. Hoffman compiled an incredible record in four sports: 166-40-16 in football; 385-153 in basketball; 52-13 in track; and 90-60 in baseball for a grand average of .694. In 1934 he received the award for the best coached team at the National Catholic Basketball Tournament.

Bottom row: Left to right: Asst. Coach L. S. Stringer, Pomierski, Buchheit, Hynes, J. Doyle, D. Horwath (Captain), Montanus, E. Kopinski, Head Coach W. S. Hoffman. **Second row**: Marshall (Manager), Dineen, Thorne, Priester, Leichtweis, O'Malley, Flavin, Cochrane (Asst. Manager). **Third row**: Verego, Grabbe, O'Brien, J. Ahern, J. Moriarity, Kinder, McManus. **Fourth row**: Springate, Passero, Lyons, Carter, Hutter, McMahon, Johnson. **Fifth row**: Delaplaine, King, Dressel, R. McNellis, J. Russell, W. Hamlin, Curtis.



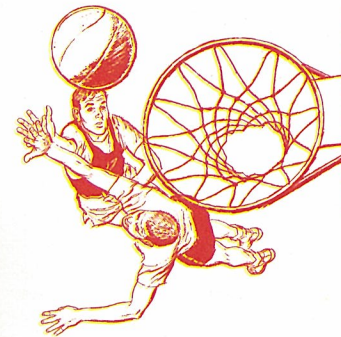
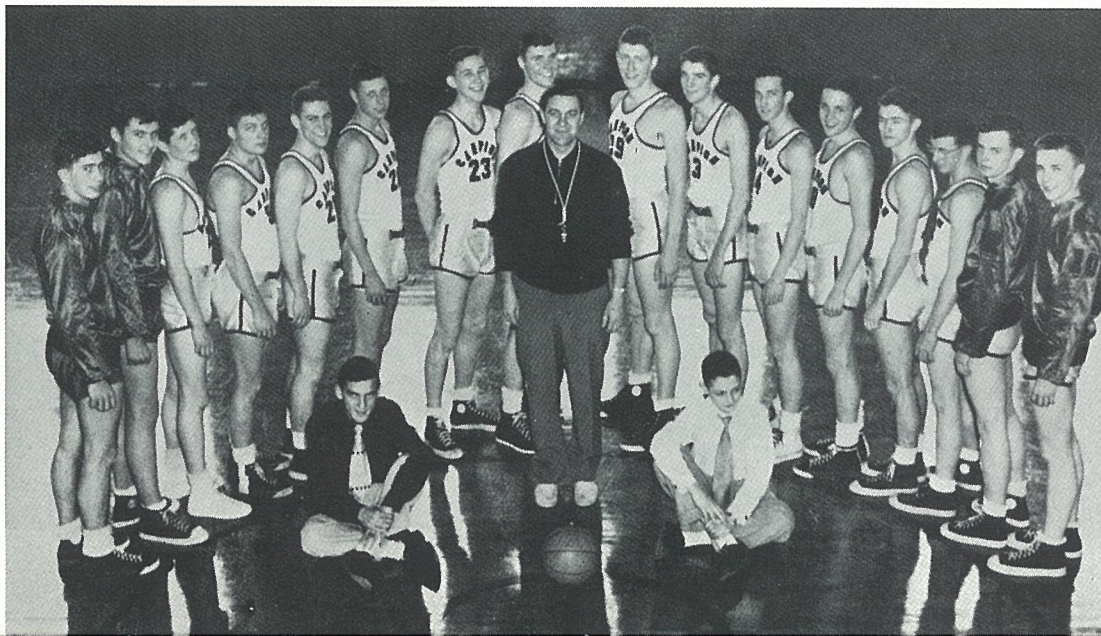
Campion's basketball team for 1930-31 rolled up a 20-3 record, taking the state championship and winning its first two games in the National Catholic Basketball Tournament. Three players received first-team All-State honors: Captain George Ireland, Les Wright, and Jack Flanigan. "Buzz" Garvey was named to the second team. In the National Tournament the team was awarded the Doctor E. J. Norton Trophy for scoring the most points in a single game, 55.

The 1950-51 basketball team compiled a 20-3 record, capturing third place in the State Tournament. The team, anchored by Ed Fox at center, consisted of Paul Romweber and Bob Meyer at guards, and John Zahner and All-State Dick Boushka at forwards. Coach Nick's '50-51 basketball squad was named the top team of the LaCrosse Diocese.

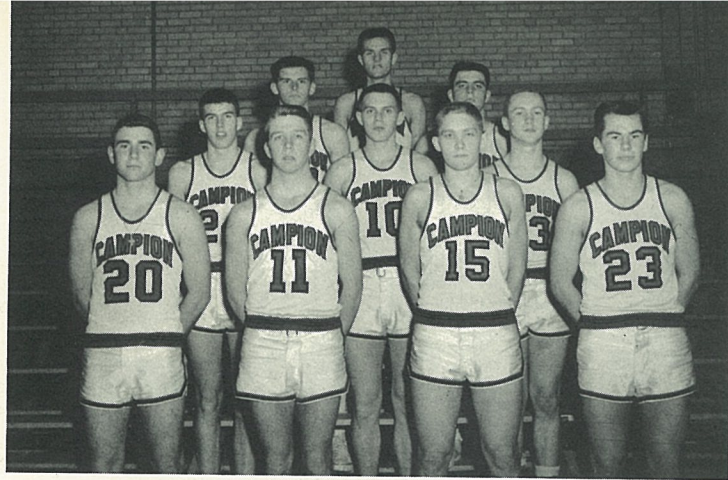


Left to right, **Top row:** Coach W. S. Hoffman, Pahlman, Eggermann, Wright, Sullivan, J., Bernbrock, Dooley (Manager). **Middle row:** Sullivan, R., Garvey, McCourt, Ireland, Curtin, Fitzgibbons, Ryan. **Bottom row:** Flanigan, Cholewinski, Brockman, Will.

Left to right, **Standing:** Biermann, Westerkamp, Kennedy, Harmon, Meyer, Ronweber, P. Zahner, Boushka, Fox, McKenna, Gammon, Romweber, J., Foran, Wheeler, Casey, Holzer. **Seated:** Lawler, Dunlap. **Center:** Coach Mel Nicks.



Mel Nicks was head basketball and track coach from 1947 to 1952 when he left to become athletic director at St. Norbert's College. During his years of coaching high school, Coach Nicks compiled a very respectable 77-56 won-lost record in basketball and a 17-6 record in track for a .602 winning percentage. His best year came with the '50-51 basketball season.



Bottom row: Grim, Hibbert, D. A. Miller, Kuchenbecker.
Second row: Gromly, Bussan, D. Walsh. **Third row:** Valiulis, Powers. **Top row:** Bosch.
 On team but not pictured: Oskins, Frauenfelder, and J. J. O'Connor (Manager).

Coach James O. Peterson came to Campion in 1954 and in 1958 guided the basketball team to one of its greatest seasons, capturing third in the State Tournament. This powerhouse, which consisted of Al Hibbert and Dennis Walsh at guards, Tim Oskins and John Powers at forwards, and Mike Bosch at center, compiled a 20-5 season record, and won both the regional and conference championships.



Head Football Coach
 L. G. Friedrichs

Fr. Walter H. Halloran has been assistant varsity football coach for the past seven years under Mr. Peterson and Mr. Friedrichs.

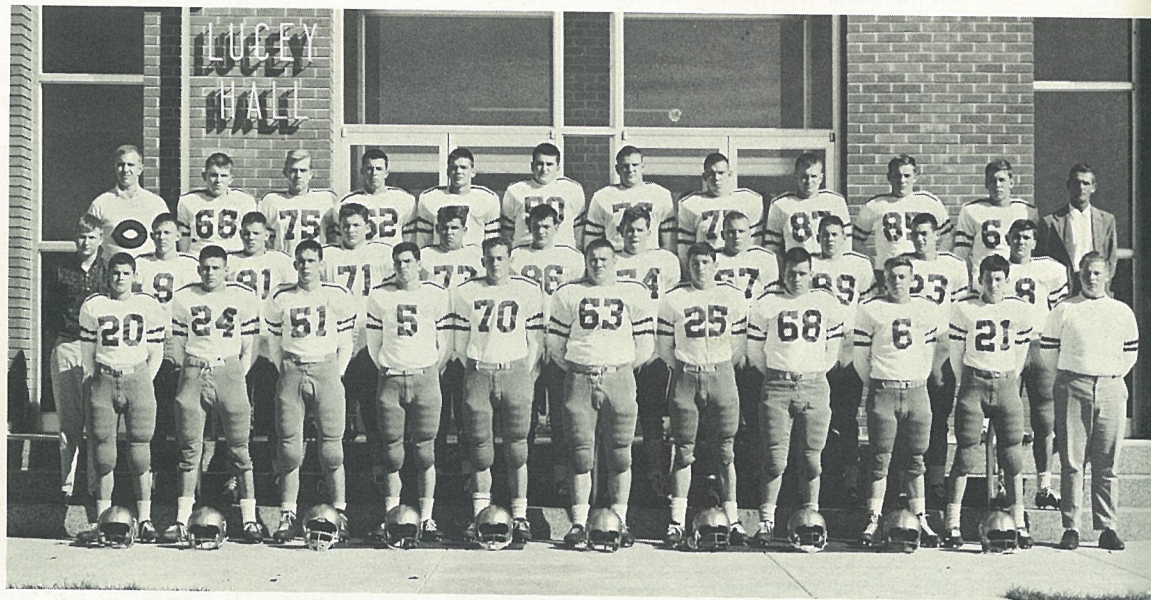


Symbolizing Campion's conquering spirit in hundreds of athletic battles, the homecoming bonfire sends flames high into the night.

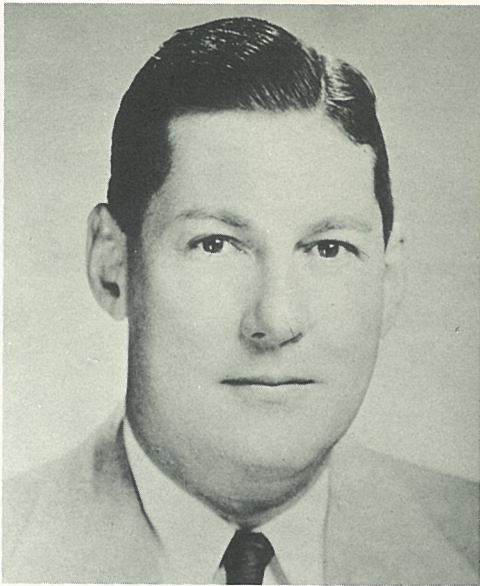


Athletic Director
 Coach J. O. Peterson

Coach L. G. Friedrichs compiled excellent records while coaching Jesuit high schools in Milwaukee, New Orleans, St. Louis, and Omaha. His record in prep coaching is an amazing 72-20-1. Mr. Friedrichs instilled into the '62 team his own spirit of fire and determination. Completing the season with an 8-1 record. All-Diocesan honors were received by Hinko, Limmex, Garrity, M. Farrell, R. Mied, and Ed Schmitt.

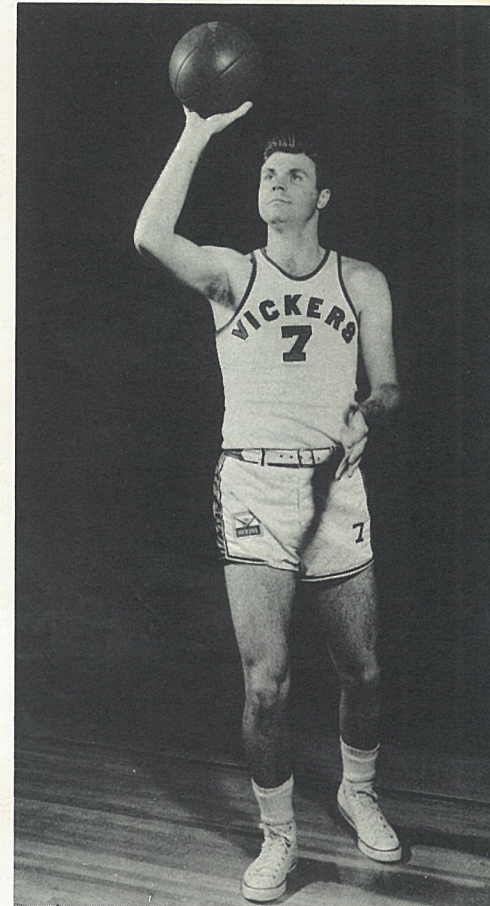


Left to right, **Bottom row:** Friedrichs, Rink, Carroll, Simpson, McCue, Hinko, Fitzgerald, Dunn, J., Skemp, Farrell, E., Konat (Manager), **2nd row:** LaChance, R. (Assistant Mgr.), Tucker, Byrne, Tondrowski, Grooms, Horgan, Murphy, J. J., Stoycheff, Englehart, Garrity, Schmidt, E. **Top row:** Tures, Kridelbaugh, Fischer, Farrell, M., Mied, R., Klieforth, Mied, T., Limmex, Pazdan, Shinnors, Kelly, G., Coach L. G. Friedrichs.

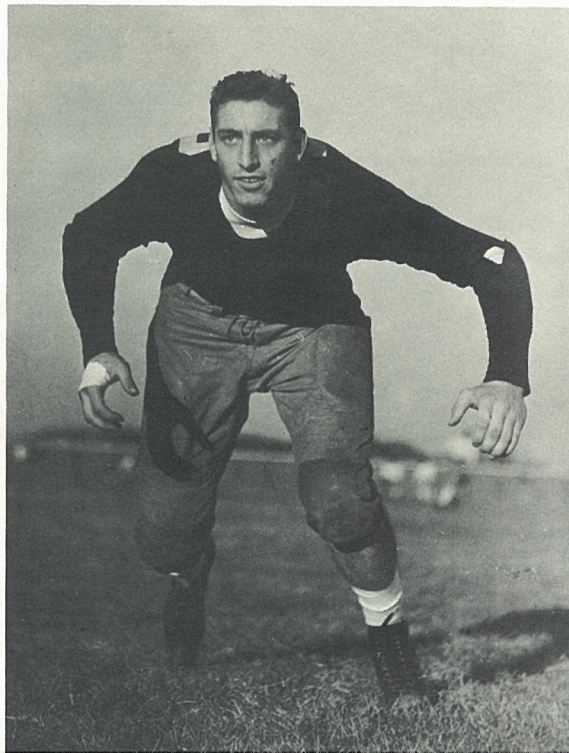


"Coach of the Year" in 1958 and 1963, this year George Ireland guided his Loyola team to the N.C.A.A. Championship over top-ranked Cincinnati. Before graduating from Campion in 1932, Ireland won All-State honors in both football and basketball. Ireland started every varsity basketball game at Notre Dame during his three seasons. In his last two years he made All-American.

After making All-State in both football and basketball at Campion, Dick Boushka went on to fame at St. Louis University. He was All-Missouri Valley three consecutive years and All-American his senior year. After graduation he was a member of the United States Olympic Team which captured the Gold Medal, going undefeated in 1956. In 1957, as a member of the champion U. S. Air Force Team, he was named most valuable player in the National A.A.U. Tournament. The next year he was a member of the undefeated All-Star team which toured Russia and the same year received the Knute Rockne Award for basketball achievement. In 1959 he played on the Pan-American team which won every game in Chicago. Presently he is employed by and plays ball for the Vickers Petroleum Company.



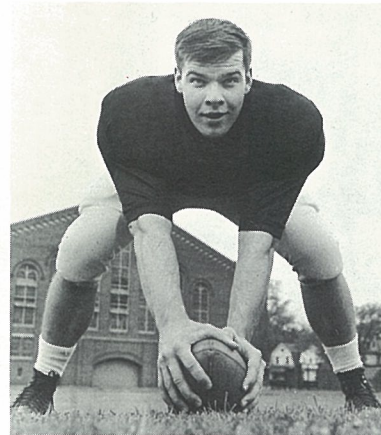
Richard "Butch" Pfefferle captained the Campion football team of 1929 to a 7-1 record after playing a major role at tackle for the undefeated 1928 team. "Butch" later earned three varsity letters at Notre Dame, despite playing with one arm strapped to his body due to a shoulder separation. He played in the College All-Star Game of 1936. Pfefferle coached briefly after his playing days.



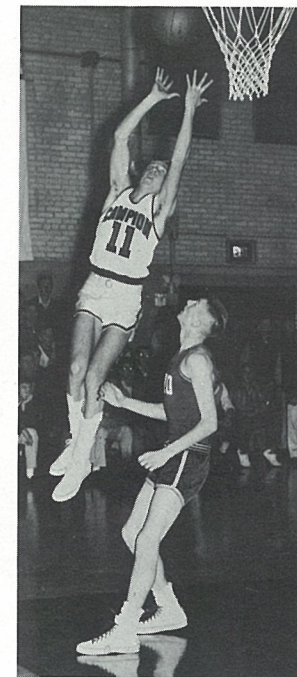


John Powers, '58 fullback: played three years at Notre Dame and is currently an offensive end with the Pittsburgh Steelers of the N.F.L.

James Gallagher, '59 center: first team All-State, All-Regional, and All-Diocesan in 1958. Only Champion football player ever to make All-State first team. He played college ball at Michigan.



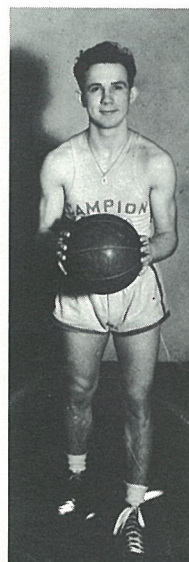
Alan Hibbert, '58 guard: first team All-State, All-Conference, and All-Diocesan. Played one year of college ball at Georgetown.



Mike Bosch, '58 center: first team All-Diocesan and All-Conference in both Junior and Senior years. All-State in 1958. Earned three varsity letters at Rockhurst College.



Gerald "Bud" Connors, '30 center: second team All-State in Junior year; first team All-State in Senior year.



James Rierden, '40 guard: named All-National first team in National Catholic Tournament in Chicago.



Exhilaration after a hard-won victory ending a successful season (pictured is the 1957 team after 6-1-1 season).

We have pictured several of the many outstanding athletes in the history of Campion. It would be difficult to show them all, so we mention here a few of the others and the honors they have won.

Among the college athletes, one of the most outstanding was *Leo Ratchen* who participated in all major sports and captained the baseball team three years and the football team two years. Other college baseball stars were *Edwin Schmitz*, a great pitcher; *Carl Zachman*, an excellent basketball player and captain of the 1920 baseball team; and *William Walsh*, still the holder of two track records. *Red Faber*, later to win major league baseball fame.

In the '30's there was *Jack Sullivan* who went



Carl Zachmann

on to football fame at Northwestern; "*Swede*" *Casgrove*, a great basketball and football player who continued at Marquette; *Jimmy Hendricks*, All-National basketball forward; *Paul McErlean* and *Ray Tures*, outstanding football players; *Walter Tobiascki*, an all-around natural athlete; *Bobby McClellan*, an All-State and All-National basketball forward; *Chester Benben*, All-State in football; *Walt Holloran*, captain and star of the 1939 track team; and *Tom Keannelley*, a great boxer who at one time ranked among the top ten contenders for the heavyweight title.



A handful of the most important trophies won by Coach Hoffman and his teams

Top athletes during the '40's were: "*Jake*" *Skall*, one of the greatest all-around athletes in Campion's history; *Jack Meganck*, a great basketball player; *Jim Vickers*, excellent golfer who eventually ranked as one of the top amateurs; *Howie and Tom Kalb*, each of whom captained Campion basketball teams; *Joe Horwath* and "*Dug*" *Doyle*, outstanding football players.

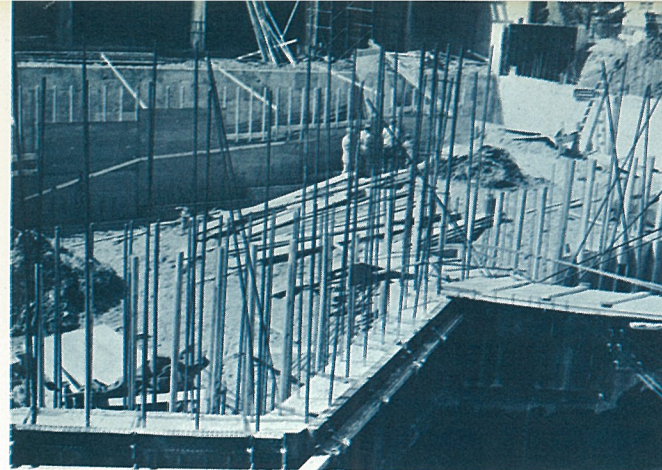
Top athletes of the '50's and '60's were: *Bob Meyers*, All-State guard in basketball; *George Braasch*, an excellent high jumper; *Mike O'Brien*, All-Diocesan football player; *Chuck Miller*, one of the best high school pitchers Campion has ever had; *John Valiulis*, a top basketball player; *Gerry Kuchenbecker*, baseball captain and All-

State guard in basketball; *Mike Mallon* and *Dave Carey*, All-State basketball players; *John Hubbard*, All-State halfback; *Tom Lardner*, a great football player, now playing at Detroit, who holds the Catholic state shotput record; and *Phil Hinko* and *Steve Limmex*, All-State guards of the 1962 football team.



Leo Ratchen

Workmen prepare to pour the concrete walls and floor of pool in spring, 1962.



ARCHITECTS

Brielmaier, Sherer, and Sherer
Milwaukee, Wisconsin

GENERAL CONTRACTORS

T. S. Willis Company
Janesville, Wisconsin

HEATING AND VENTILATING

R. H. Lovold, Inc.
La Crosse, Wisconsin

ELECTRICAL CONTRACTORS

Westphal and Company, Inc.
Janesville, Wisconsin

PLUMBING CONTRACTORS

J. F. Ahern Company
Fond du Lac, Wisconsin

Pipe insulation

Sprinkman and Sons Corp.
Milwaukee, Wisconsin

Ventilation fabrication

Service Sheet Metal Company
La Crosse, Wisconsin

Temperature controls

Powers Regulator Company
Skokie, Illinois

Pipe trench insulation

Paul Abbott Company
St. Paul, Minnesota

Pipe and valves supplied

Chicago Tube and Iron Company
Chicago, Illinois

Pipe fittings

Crane-Ordway Company
La Crosse, Wisconsin

Heating and ventilating equipment

Trane Company
La Crosse, Wisconsin

Lighting fixtures

Englewood Electric Supply Company
Rockford, Illinois

Underwater pool lights

Crouse-Hinds Company
Milwaukee, Wisconsin

Pool lights supplied

Westinghouse Electric Supply Company
Milwaukee, Wisconsin

Sound system

Continental Sound Engineering
Incorporated
Brookfield, Wisconsin

Clock, program, and alarm system

Simplex Time Recorder Company
Madison, Wisconsin

Electric panels and switches

Square D Company
Milwaukee, Wisconsin

Pool drains, etc.

Josam Company
Michigan City, Indiana

Pool filter equipment

Bruner Company
Milwaukee, Wisconsin

Pumps

Chicago Pump Company
Chicago, Illinois

Plumbing supplies

Plumbers' Supply Company
Fond du Lac, Wisconsin

Plumbing supplies

La Crosse Plumbing Supply Company
La Crosse, Wisconsin

Galvanized pipe

A. M. Byers Company
Pittsburgh, Pennsylvania

Cast iron soil pipe

Alabama Pipe Company
Chicago, Illinois

Glazed and special sound-absorbent wall tile

Natco Corporation
Chicago, Illinois

Millwork

Metz Manufacturing Company
Dubuque, Iowa

Resilient tile

E. R. Flint Company
Madison, Wisconsin

Glass and glazing

T. C. Esser Company
La Crosse, Wisconsin

Metal doors and frames

Jim Michel Building Specialties, Inc.
Milwaukee, Wisconsin

Face brick

Janesville Brick and Fuel Yards
Janesville, Wisconsin

Excavating

Schneider's Excavating Company
Prairie du Chien, Wisconsin

Lath and plastering

Tri-State Plastering Company
Potosi, Wisconsin

Aluminum wall panels

Wisconsin Bridge and Iron Company
Milwaukee, Wisconsin

Reinforcing steel

Midwest Metals Corporation
Davenport, Iowa

Ceramic tile and marble

La Crosse Mosaic Tile Company, Inc.
La Crosse, Wisconsin

Fire extinguishers

General Fire Equipment Company
Milwaukee, Wisconsin

Gymnasium wood flooring

Shannon Floor Company, Inc.
Milwaukee, Wisconsin

Caulking and masonry cleaning

R. E. Doebler Company
Milwaukee, Wisconsin

Painting

Raue and Sons, Inc.
Watertown, Wisconsin

Special wall finishes

C. J. Koenig Company, Inc.
Milwaukee, Wisconsin

Glass-block window walls

Thinlite of Wisconsin, Inc.
West Allis, Wisconsin

Ready-mix concrete and road asphalt

Prairie Sand and Gravel Company
Prairie du Chien, Wisconsin

Diving boards, starting blocks, lifeguard equipment, etc.

Robert A. Paeschke Company
Milwaukee, Wisconsin

Roofing and sheet metal

Fitzgerald Brothers
Lansing, Iowa

Acoustical tile

Sullivan Brothers, Inc.
Madison, Wisconsin

Finish hardware

Phillip Gross Hardware Company
Milwaukee, Wisconsin

Aluminum windows

Mid-City Lumber and Supply Company
Milwaukee, Wisconsin

Structural and miscellaneous metals

Theodore Kupfer Iron Works, Inc.
Madison, Wisconsin

Pool waterproofing

W. H. Pipkorn Company
Milwaukee, Wisconsin

Locker room benches

Wisconsin School Service
Madison, Wisconsin

Concrete block furnished

Concrete Products Company
Dubuque, Iowa

Cut stone and granite

Vollbrecht Cut Stone Company
Milwaukee, Wisconsin

Lounge flooring

Milwaukee Marble Company
Milwaukee, Wisconsin

Concrete slab forming system

Gateway Erectors, Inc.
Chicago, Illinois

Basketball bleachers, back stops

Milwaukee Equipment Company
Milwaukee, Wisconsin

Fencing for tennis courts

Century Fence Company
Waukesha, Wisconsin

Maintenance supplies and equipment

Industrial Chemical Laboratories
Cedar Rapids, Iowa

Steel lockers

All Steel Equipment, Inc.
Aurora, Illinois

Swimming suits and apparel

Champion Knitwear
Rochester, New York

Refrigeration and ice cream

Beatrice Foods
Dubuque, Iowa

Tennis court construction

Prairie Construction Company
Prairie du Chien, Wisconsin

Athletic equipment

Higgins Sporting Goods Company
Racine, Wisconsin

Automatic washers and dryers

Coin-Tronics, Inc.
Minneapolis, Minnesota

Vending equipment

Prairie Bottling Company
Prairie du Chien, Wisconsin

Ice cream vending machine

Gold Bond Ice Cream Company
Richland Center, Wisconsin

Wood and pipe

Horsfall Lumber Company
Prairie du Chien, Wisconsin

Supplies and food products for
the lounge snack shop by the following:

Aslesens
Minneapolis, Minnesota

Giunta Brothers, Inc.
Dubuque, Iowa

O. R. Pieper Company
Milwaukee, Wisconsin

Benish Candy Company
Prairie du Chien, Wisconsin

Swift and Company
South St. Paul, Minnesota

John Sexton and Company
Chicago, Illinois

Dubuque Packing Company
Dubuque, Iowa

Prairie Maid Bakery
Prairie du Chien, Wisconsin



PHOTOGRAPHS:

Margery Goergen Studios, McGregor, Iowa
Universal Photo Service, LaCrosse, Wisconsin
and Dexter Press, Nyack, N.Y.
William Wollin Studios, Madison, Wisconsin
David Bates, '64, Fremont, Ohio

DRAWINGS:

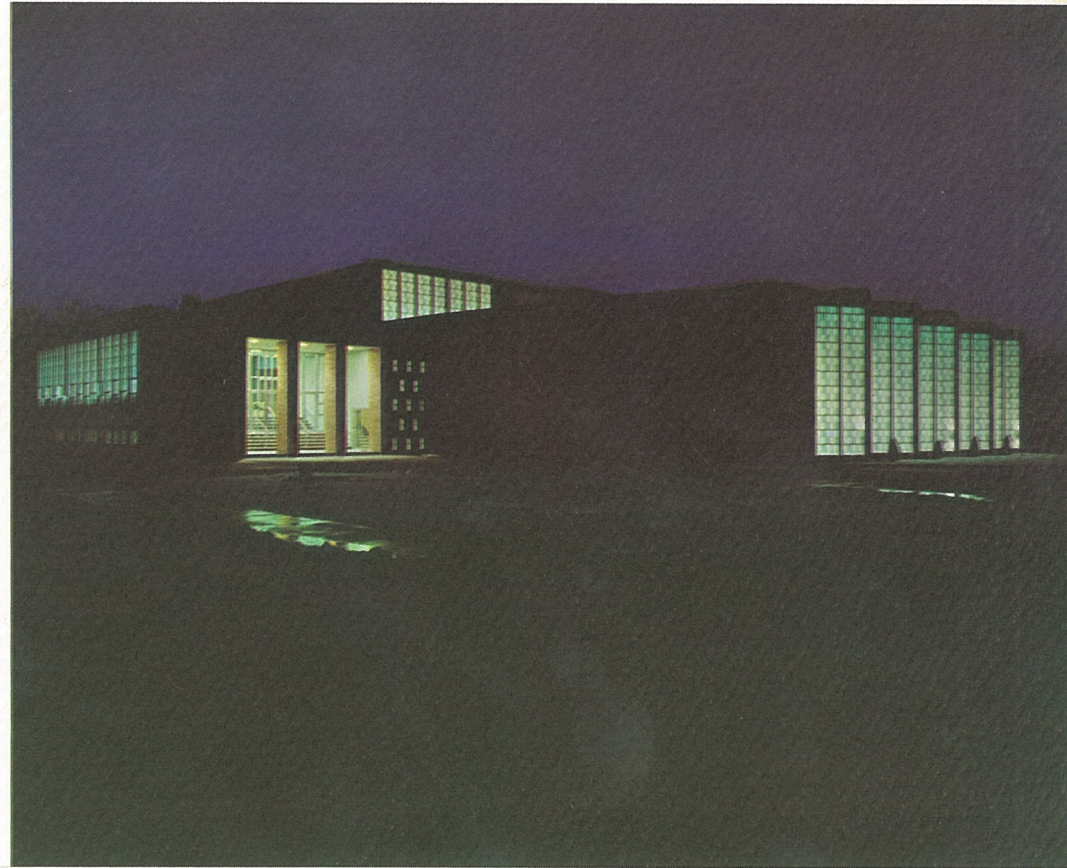
Timothy App, '65, Akron, Ohio
William Sherer (Brielmaier, Sherer, and Sherer), Milwaukee, Wisconsin

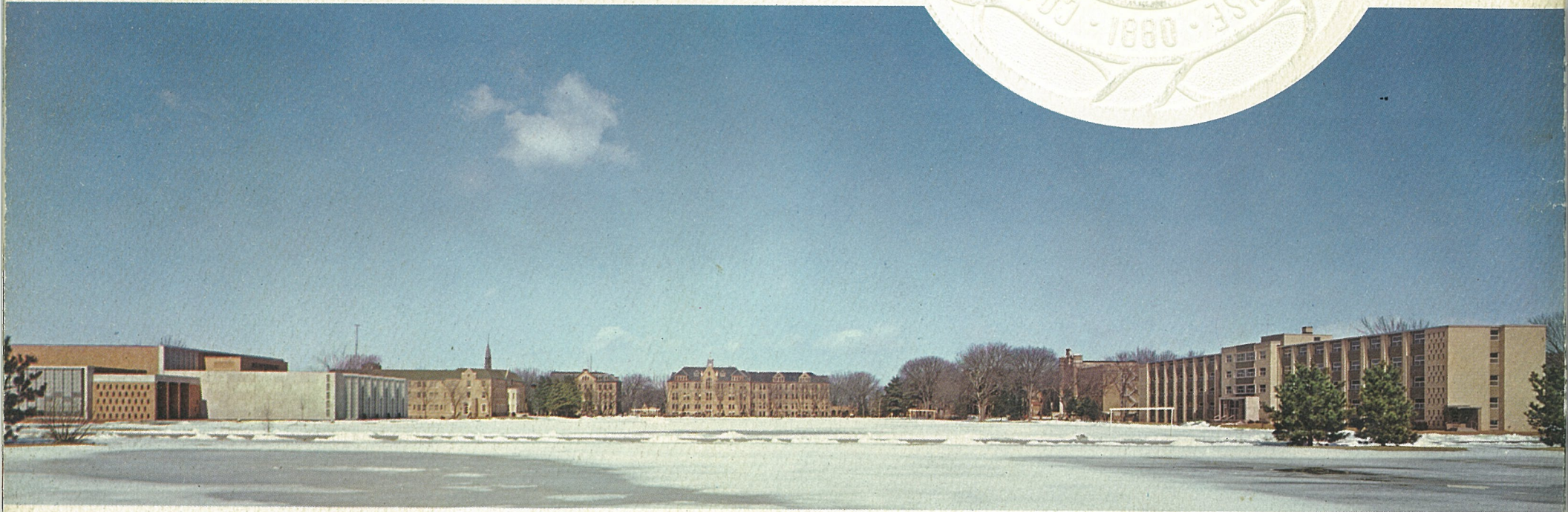
LAYOUT:

George E. Burbach, Cary, Illinois

PRINTING:

Charles Biggam





CAMPION JESUIT HIGH SCHOOL • PRAIRIE DU CHIEN, WISCONSIN